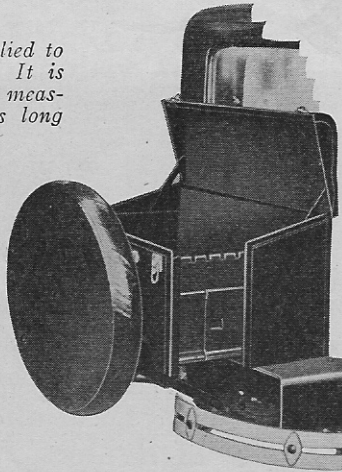


# How many *ACCESSORIES* would you have to Sell to PAY THE RENT?

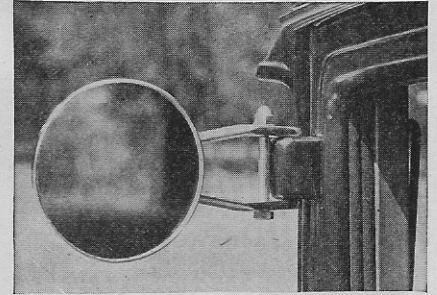
## Dan-D-Karrier

The Dan-D-Karrier can be applied to the car in a very short time. It is finished in black Morocco and measures 18 inches high, 36 inches long and 12 inches wide when closed and 23 inches wide when opened. The extensions lock every two inches. All joints are reinforced and spot welded for durability and strength. The tire carrier accommodates any size rim and the tire is always in an upright position for convenient changing. Special platforms are furnished for most all cars which set the Karrier at the proper height and leave the gas-line pipe accessible. List price including platform \$47.50. Lafayette Steel Products, Inc., Lafayette, Ind.

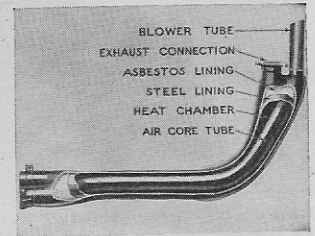
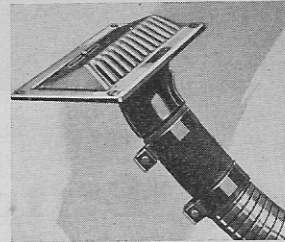


## "Spotter"

The "Spotter," a mirror which clamps on the door hinge and gives a full view to the left and rear of the car, is made by Peters & Russell, Inc., Tecumseh Building, Springfield, Ohio. The "Spotter" is quickly and easily installed, since it is not necessary to remove the bolt in the door hinge. It is chromium plated and sells for \$3.75

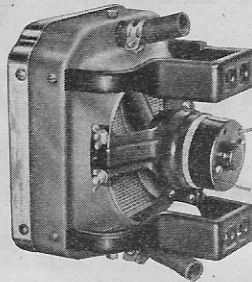
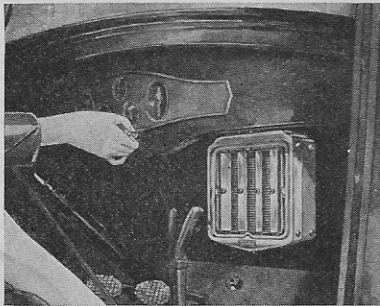


## Kelch and Bovey Heaters



The Metalcraft Heater Corp., Grand Rapids, Mich., has made many improvements in the Kelch ventilating and Bovey air-core heaters. An electric blower recirculates the air from the car interior through the heater and back into the car interior so that instant heat is supplied regardless of radiator shutters. All valves have been eliminated and the heat is now regulated by simply turning on and off the electric blower. Both front and rear compartments are equipped with manual shut-off. Fabric insulation tubes prevent heat transmission along continuous metal parts and also telegraphing of heater or body noises into the interior of the car

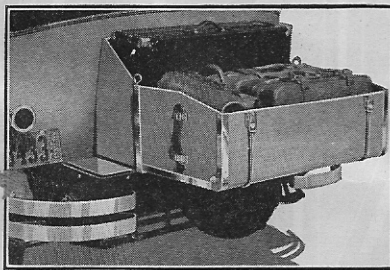
## Arvin Heater



The Arvin hot water heater is mounted on the dash above the floor board so that leg or foot room is not cramped. It consists of a radiator through which hot water from the cooling system circulates and a small electric fan mounted behind it that forces air through the radiator core. The outlet casting is equipped with a thermostat that brings the water to 160 degrees before entering the cooling system. Individually adjustable deflector blades are mounted in front of the heater radiator which may be moved to direct heat to the right or left. In summer the water can be shut off from the heater and the fan used for ventilating. It is made in three sizes including a special one for model A Fords. Noblitt Sparks, Inc., Indianapolis, Ind.

## Kari-Keen Karrier

Features of the new 1930 deluxe Kari-Keen Karrier include a double moulding, two chromium plated brass locks and a large leather strap handle at both ends. As extra equipment, a one-inch chromium plated brass band, which goes around the bottom edge, is added. Both the standard and deluxe models have an insulated liner which acts as a shock absorber, preventing denting and eliminating rumble. The standard model is made for practically all cars, while the deluxe model is made only for cars with fender wells. Kari-Keen Mfg. Co., Inc., 2117 East 7th St., Sioux City, Iowa



## E. A. Micro-Horn

A new type horn, the exact size and shape of a radio microphone, is the latest development of the E. A. Laboratories, Inc., Brooklyn, N. Y. It is made in two models, finished in black enamel and chromium and can be attached to the headlamp cross bar of any car. The model L has four sound-producing diaphragms—two in front and two in back of the motor, with each pair working independently and is suited for larger cars, busses and motor boats. The model S has three diaphragms—two in front and one behind. Special universal brackets for attachment on Ford and Chevrolet cars are supplied with the model S. The model L sells for \$7.00 and the model S for \$5.00

## Anderson Sheds

Sheds are made of two layers of heavy water-proof fabric with a smooth, glossy finish and secured to the rear fenders by self-adjusting cross rods with case hardened points on either end. The rods are operated by an enclosed compression spring which forces the points in the fender flanges and prevents the rod from falling out whenever the fender might be sprung. The Sheds are weighted at the bottom to keep them taut. There are five sizes that sell for \$2.75 per pair. Anderson Mfg. Co., 15 Tudor St., Cambridge, Mass.

